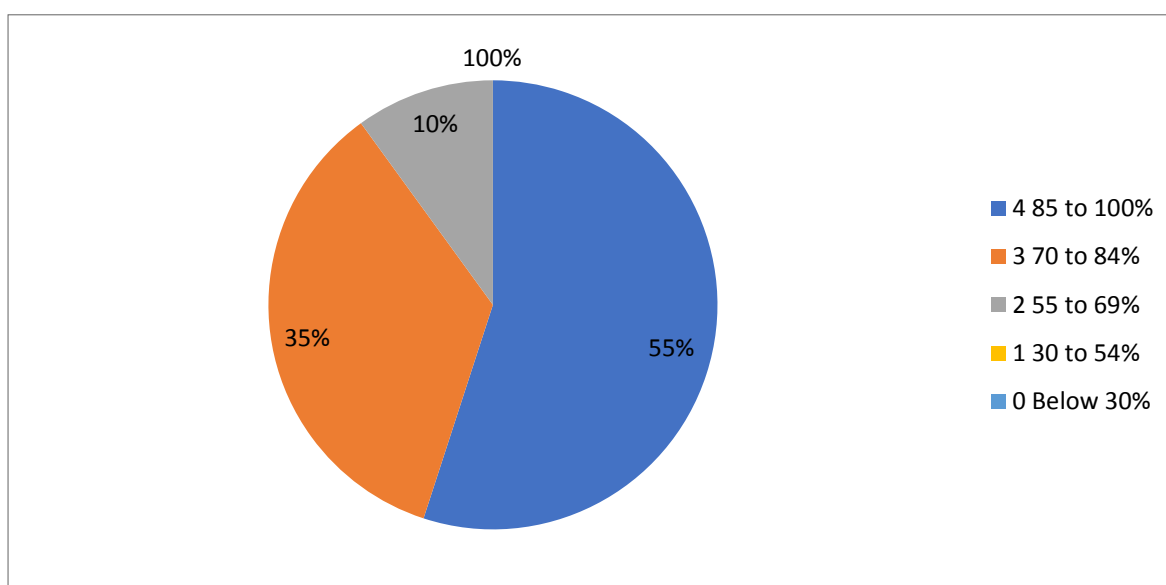


CRITERION II TEACHING LEARNING AND EVALUATION

Q1. HOW MUCH OF THE SYLLABUS WAS COVERED IN THE CLASS ?

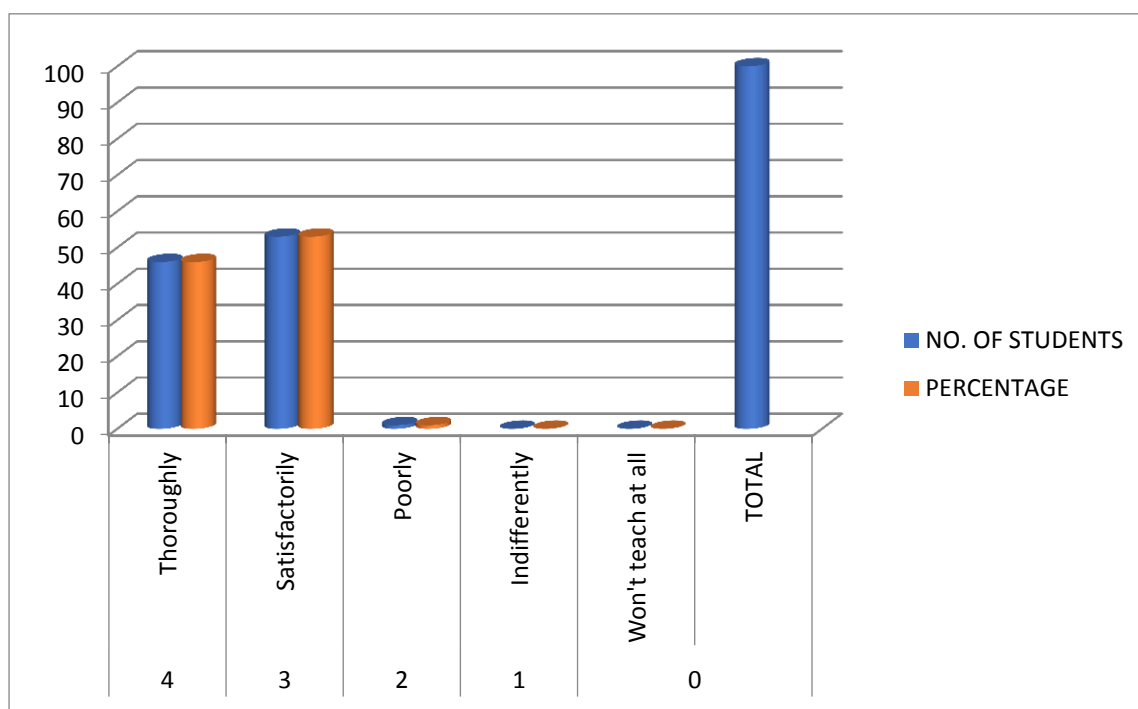
RATE	CRITERIA	NO. OF STUDENTS	PERCENTAGE
4	85 to 100%	55	55
3	70 to 84%	35	35
2	55 to 69%	10	10
1	30 to 54%	0	0
0	Below 30%	0	0
	TOTAL	100	



INTERPRETATION : MAJORITY OF THE STUDENTS FEEL THAT THE 85% & ABOVE SYLLABUS IS COMPLETED

Q2 HOW WELL DID THE TEACHER'S PREPARE FOR THE CLASSES ?

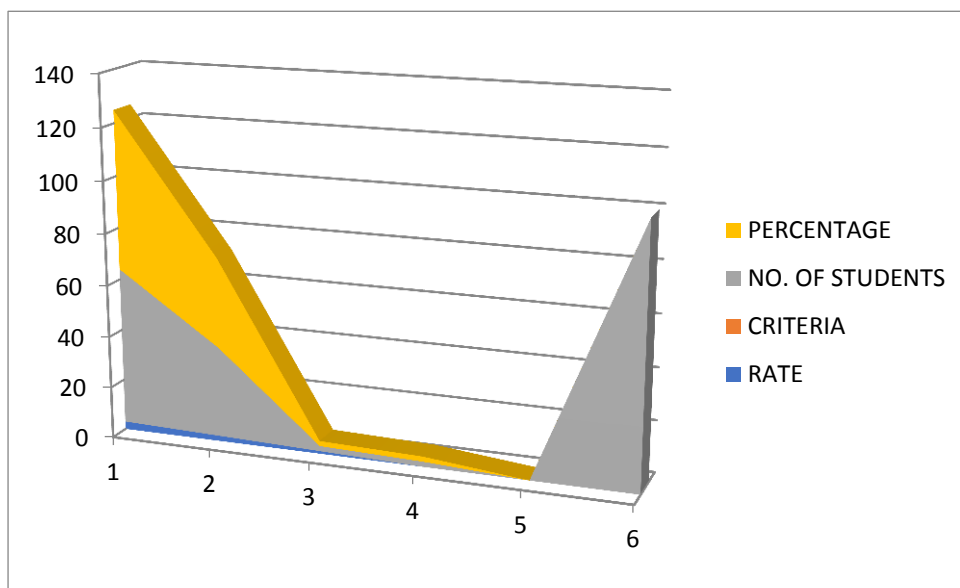
RATE	CRITERIA	NO. OF STUDENTS	PERCENTAGE
4	Thoroughly	46	46
3	Satisfactorily	53	53
2	Poorly	1	1
1	Indifferently	0	0
0	Won't teach at all	0	0
	TOTAL	100	



INTERPRETATION : HIGHEST PERCENTAGE OF STUDENTS WERE SATISFIED WITH THE COMPLETION OF SYLLABUS

Q3. HOW WELL ARE THE TEACHERS ABLE TO COMMUNICATE ?

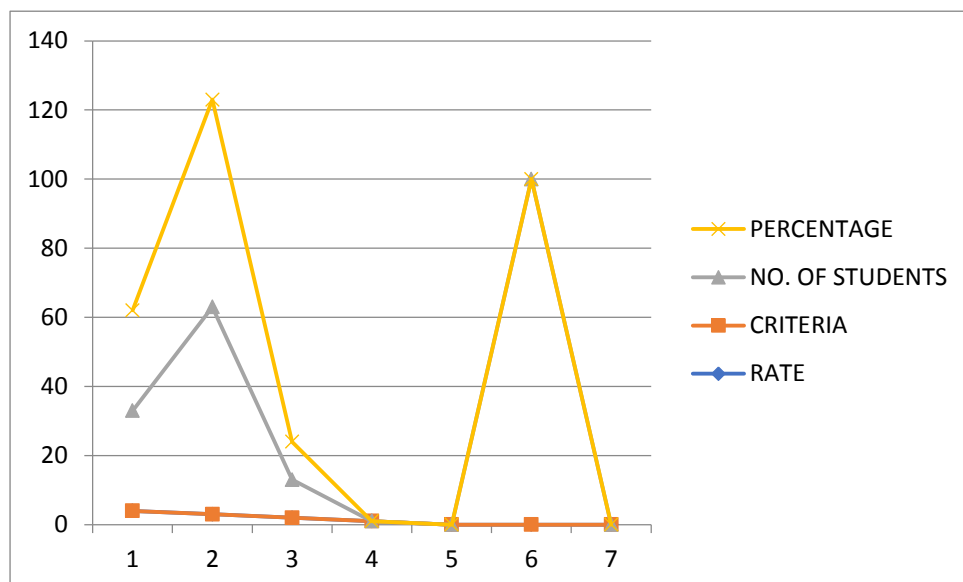
RATE	CRITERIA	NO. OF STUDENTS	PERCENTAGE
4	Always effective	61	61
3	Sometimes effective	35	35
2	Just Satisfactorily	2	2
1	Generally ineffective	2	2
0	Very poor communication	0	0
	TOTAL	100	



INTERPRETATION: MAJORITY OF THE STUDENTS STATED THAT THE COMMUNICATION BY TEACHERS WERE ALWAYS AFFECTIVE.

Q4. THE TEACHER'S APPROACH TO TEACHING CAN BE BEST DESCRIBED AS

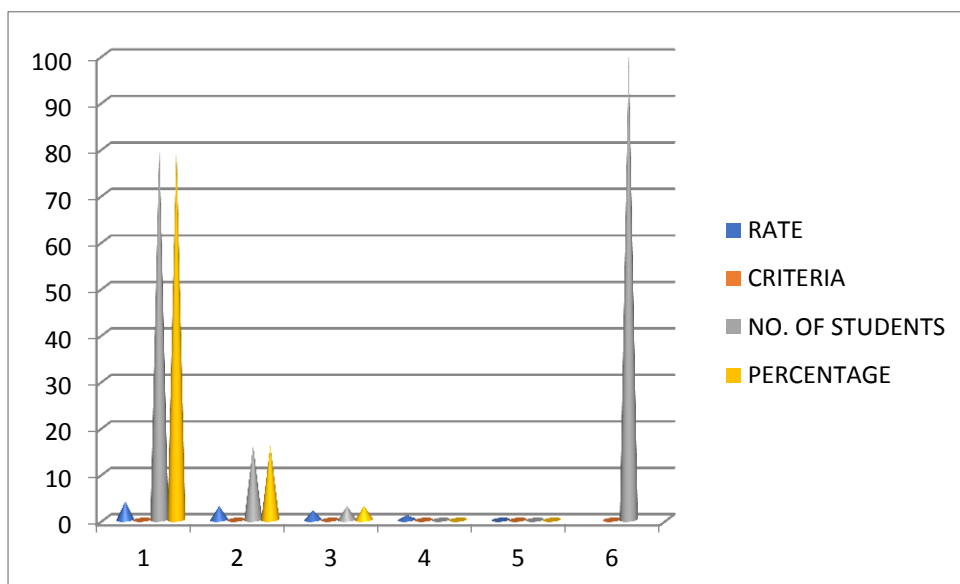
RATE	CRITERIA	NO. OF STUDENTS	PERCENTAGE
4	Excellent	29	29
3	Very Good	60	60
2	Good	11	11
1	Fair	0	0
0	Poor	0	0
TOTAL		100	



INTERPRETATION: MAJORITY OF THE STUDENTS FIND THAT THE TEACHING APPROACH IS VERY GOOD.

Q5. FAIRNESS OF THE INTERNAL EVALUATION PROCESS BY TH TEACHERS

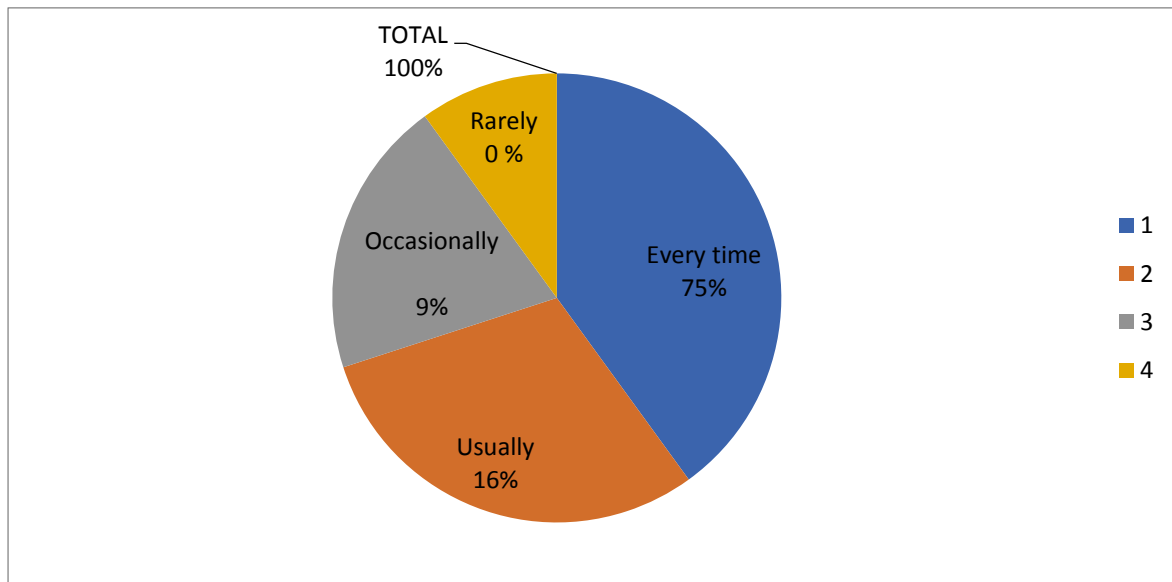
RATE	CRITERIA	NO. OF STUDENTS	PERCENTAGE
4	Always fair	81	81
3	Usually fair	16	16
2	Sometimes unfair	3	3
1	Usually unfair	0	0
0	Unfair	0	0
	TOTAL	100	



INTERPRETATION: MAJORITY OF THE STUDENTS FIND THE EVALUATION PROCESS TO BE ALWAYS FAIR.

Q6. WAS YOUR PERFORMANCE IN ASSIGNMENTS DISCUSSED WITH YOU ?

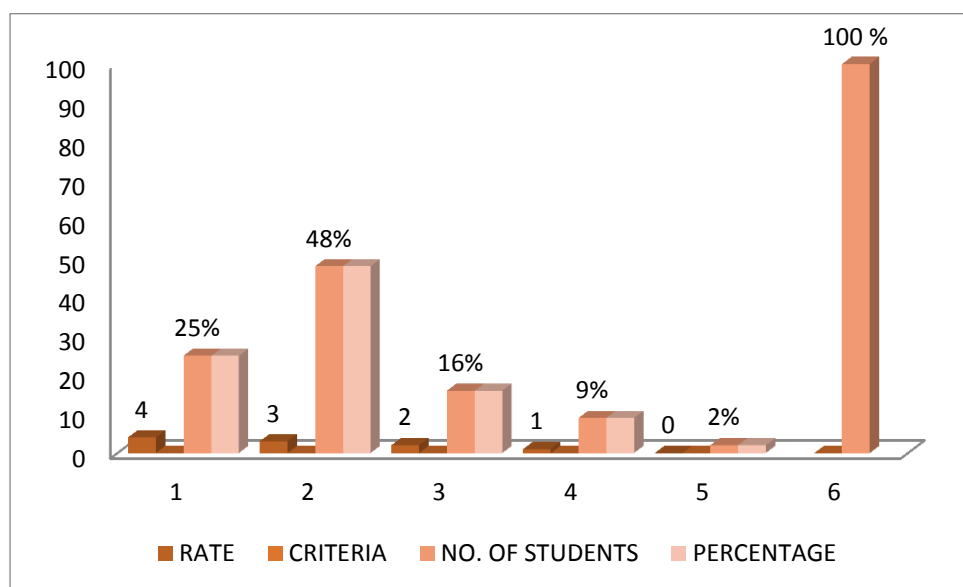
RATE	CRITERIA	NO. OF STUDENTS	PERCENTAGE
4	Every time	75	75
3	Usually	16	16
2	Occasionally/Sometimes	9	9
1	Rarely	0	0
0	Never	0	0
	TOTAL	100	



INTERPRETATION: THE AASSIGNMENT WERE DISCUSSED WITH THE STUDENTS EVERY TIME AND THIS WAS AGREED BY MAJORITY OF THE STUDENTS.

Q7. THE INSTITUTE TAKES ACTIVE INTEREST IN PROMOTING INTERNSHIP, STUDENT EXCHANGE, FIELD VISIT OPPORTUNITIES FOR STUDENTS

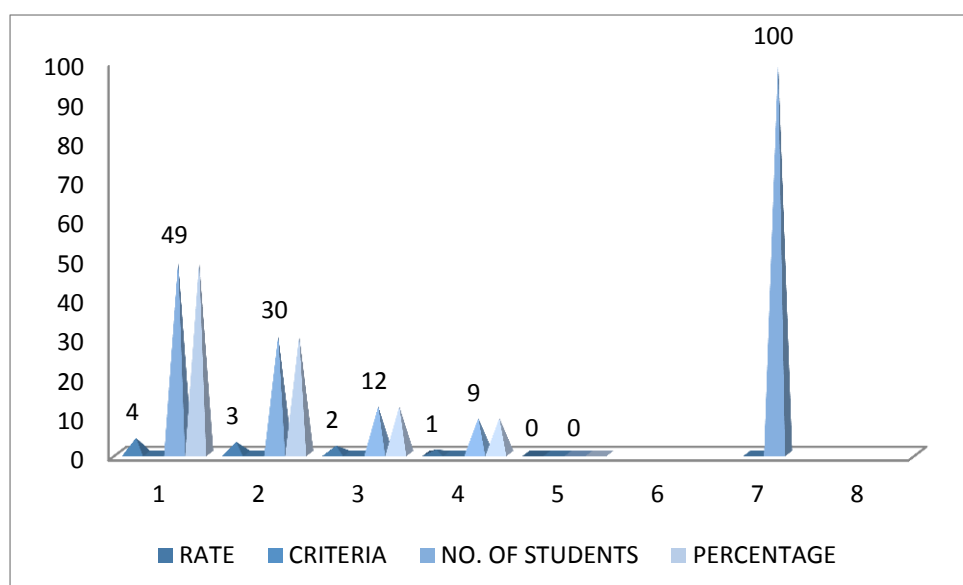
RATE	CRITERIA	NO. OF STUDENTS	PERCENTAGE
4	Regularly	25	25
3	Often	48	48
2	Sometimes	16	16
1	Rarely	9	9
0	Never	2	2
TOTAL		100	



INTERPRETATION: OFTEN THE INSTITUTE TAKES ACTIVE INTEREST IN PROMOTING INTERNSHIP, STUDENT EXCHANGE, FIELD VISIT OPPORTUNITIES FOR STUDENTS AGREED BY 48%.

Q8. THE TEACHING AND MENTORING PROCESS IN YOUR INSTITUTION FACILITATES YOU IN COGNITIVE, SOCIAL AND EMOTIONAL GROWTH

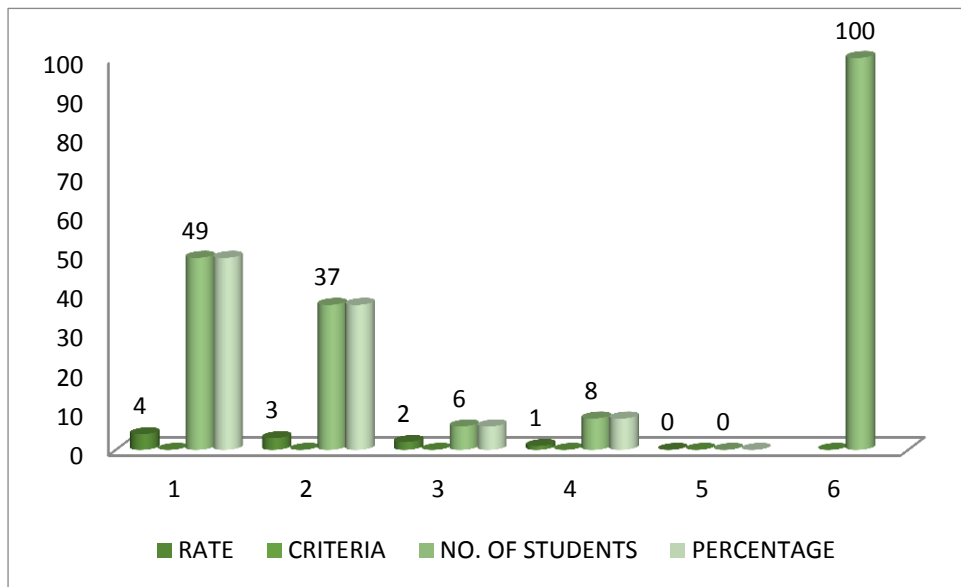
RATE	CRITERIA	NO. OF STUDENTS	PERCENTAGE
4	Regularly	49	49
3	Often	30	30
2	Sometimes	12	12
1	Rarely	9	9
0	Never	0	0
	TOTAL	100	



INTERPRETATION: REGULARLY THE TEACHING AND MENTORING PROCESS IN OUR INSTITUTION FACILITATES STUDENTS IN THEIR COGNITIVE, SOCIAL AND EMOTIONAL GROWTH

Q9. THE INSTITUTION PROVIDES MULTIPLE OPPORTUNITIES TO LEARN AND GROW

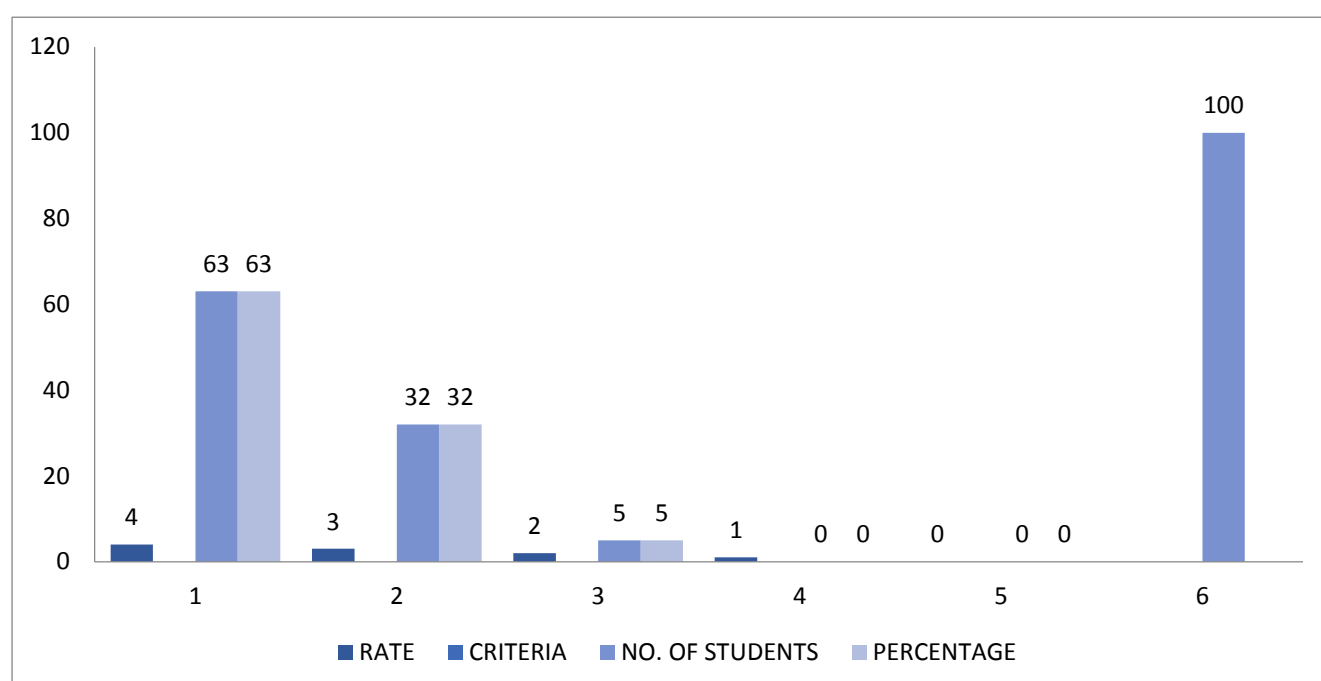
RATE	CRITERIA	NO. OF STUDENTS	PERCENTAGE
4	Strongly agree	49	49
3	Agree	37	37
2	Neutral	6	6
1	Disagree	8	8
0	Strongly disagree	0	0
TOTAL		100	



INTERPRETATION: 49% OF THE STUDENTS STRONGLY AGREE THAT THE INSTITUTION PROVIDES MULTIPLE OPPORTUNITIES TO LEARN AND GROW

Q10. TEACHERS INFROM YOU ABOUT YOUR EXPECTED COMPETENCIES, COURSE OUTCOMES AND PROGRAMME OUTCOMES

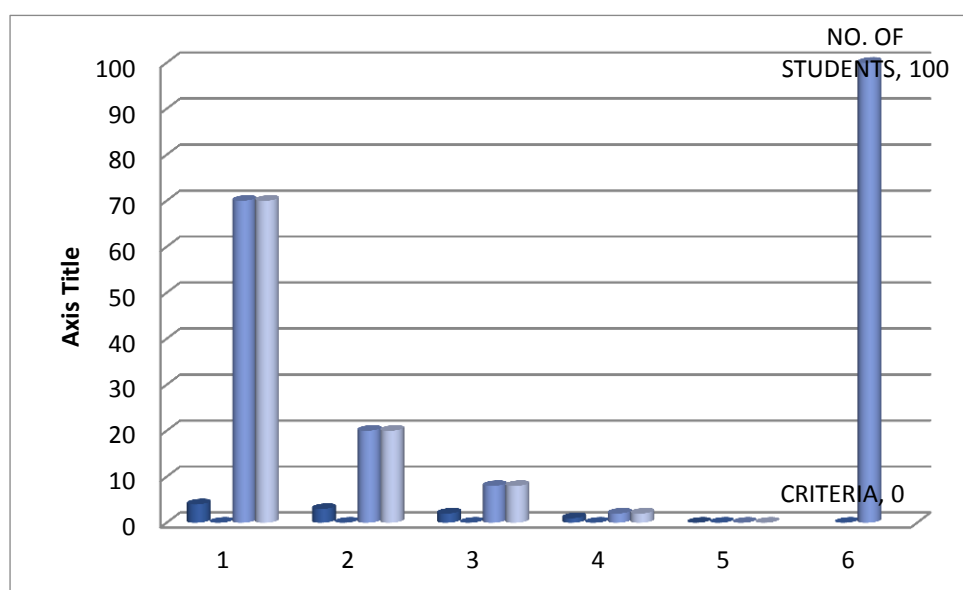
RATE	CRITERIA	NO. OF STUDENTS	PERCENTAGE
4	Every time	63	63
3	Usually	32	32
2	Occasionally/Sometimes	5	5
1	Rarely	0	0
0	Never	0	0
	TOTAL	100	



INTERPRETATION: MOST OF OUR STUDENTS FEEL THAT TEACHERS INFROM STUDENTS ABOUT STUDENTS EXPECTED COMPETENCIES, COURSE OUTCOMES AND PROGRAMME OUTCOMES ON A REGULAR BASIS

Q11. YOUR MENTOR DOES A NECESSARY FOLLOW-UP WITH AN ASSIGNED TASK TO YOU

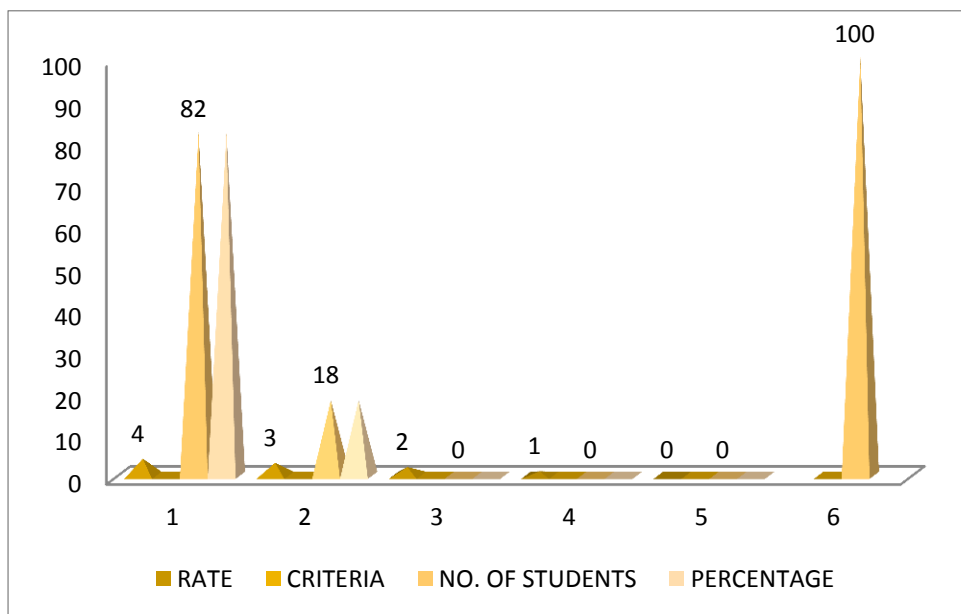
RATE	CRITERIA	NO. OF STUDENTS	PERCENTAGE
4	Every time	70	70
3	Usually	20	20
2	Occasionally/Sometimes	8	8
1	Rarely	2	2
0	Never	0	0
	TOTAL	100	



INTERPRETATION : MAJORITY OF THE STUDENTS AGREE THAT MENTOR'S DOES NECESSARY FOLLOW UP

Q12. THE TEACHERS ILLUSTRATE THE CONCEPTS THROUGH EXAMPLES AND APPLICATIONS

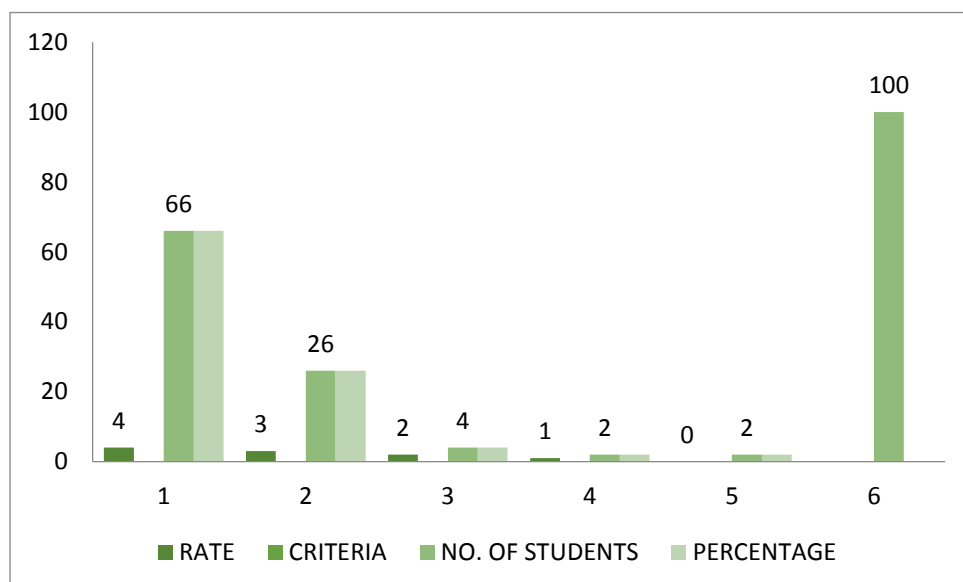
RATE	CRITERIA	NO. OF STUDENTS	PERCENTAGE
4	Every time	82	82
3	Usually	18	18
2	Occasionally/Sometimes	0	0
1	Rarely	0	0
0	Never	0	0
	TOTAL	100	



INTERPRETATION: 82 % OF STUDENTS AGREE THAT THE TEACHERS ILLUSTRATE THE CONCEPTS THROUGH EXAMPLES AND APPLICATIONS

Q13. THE TEACHERS IDENTIFY YOUR STRENGTHS AND ENCOURAGE YOU WITH PROVIDING RIGHT LEVEL OF CHALLENGES

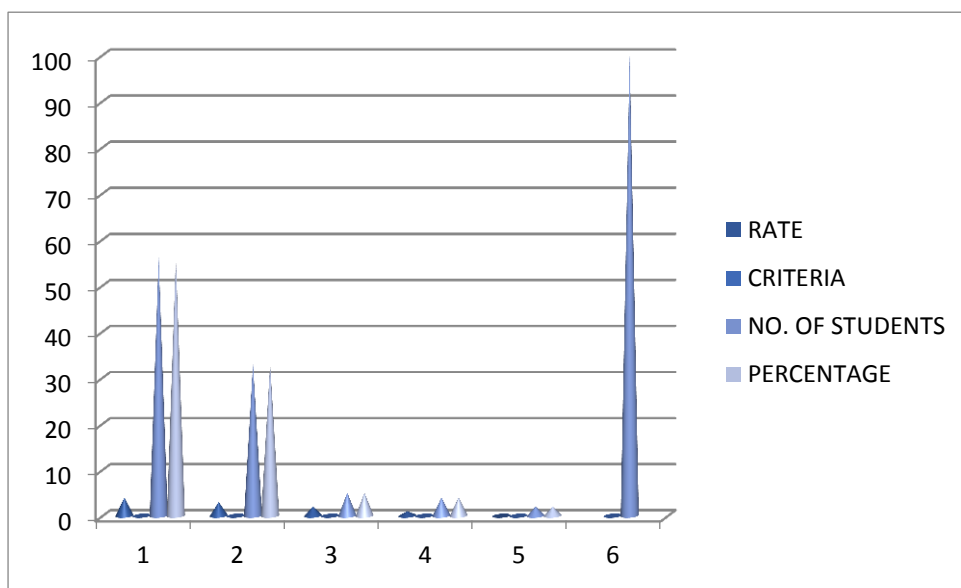
RATE	CRITERIA	NO. OF STUDENTS	PERCENTAGE
4	Fully	66	66
3	Reasonably	26	26
2	Partially	4	4
1	Slightly	2	2
0	Unable to	2	2
TOTAL		100	



INTERPRETATION: MAJORITY OF THE STUDENTS AGREE THAT THE TEACHERS IDENTIFY STUDENTS STRENGTHS AND ENCOURAGE YOU WITH PROVIDING RIGHT LEVEL OF CHALLENGES

Q14. TEACHERS ARE ABLE TO IDENTIFY YOUR WEAKNESSES AND HELP YOU TO OVERCOME THEM

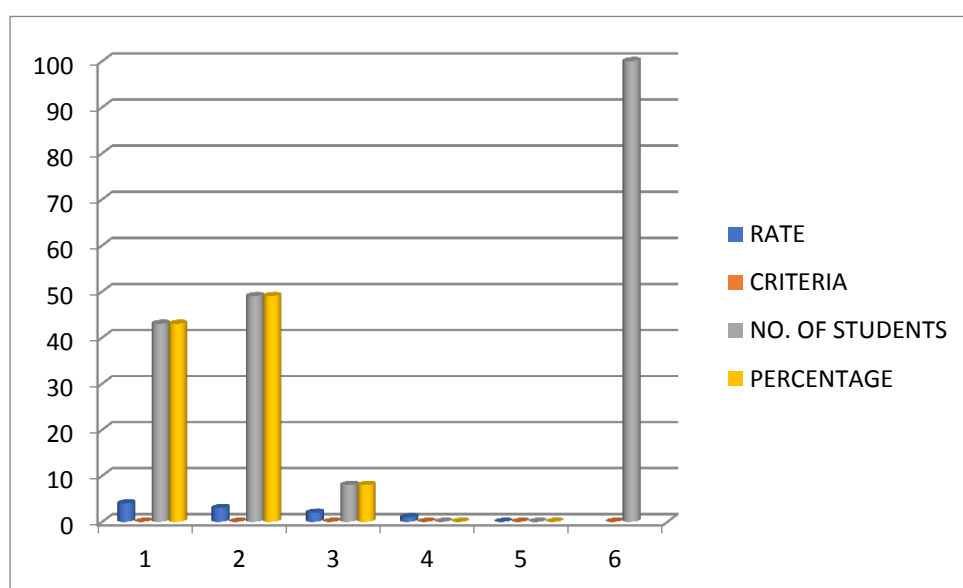
RATE	CRITERIA	NO. OF STUDENTS	PERCENTAGE
4	Every time	56	56
3	Usually	33	33
2	Occasionally/Sometimes	5	5
1	Rarely	4	4
0	Never	2	2
	TOTAL	100	



INTERPRETATION: MAJORITY OF STUDENTS AGREE THAT TEACHERS ARE ABLE TO IDENTIFY STUDENTS WEAKNESSES AND HELP YOU TO OVERCOME THEM

Q15. THE INSTITUTION MAKES EFFORT TO ENGAGE STUDENTS IN THE MONITORING, REVIEW AND CONTINUOUS QUALITY IMPROVEMT OF THE TEACHING LEARNING PROCESS

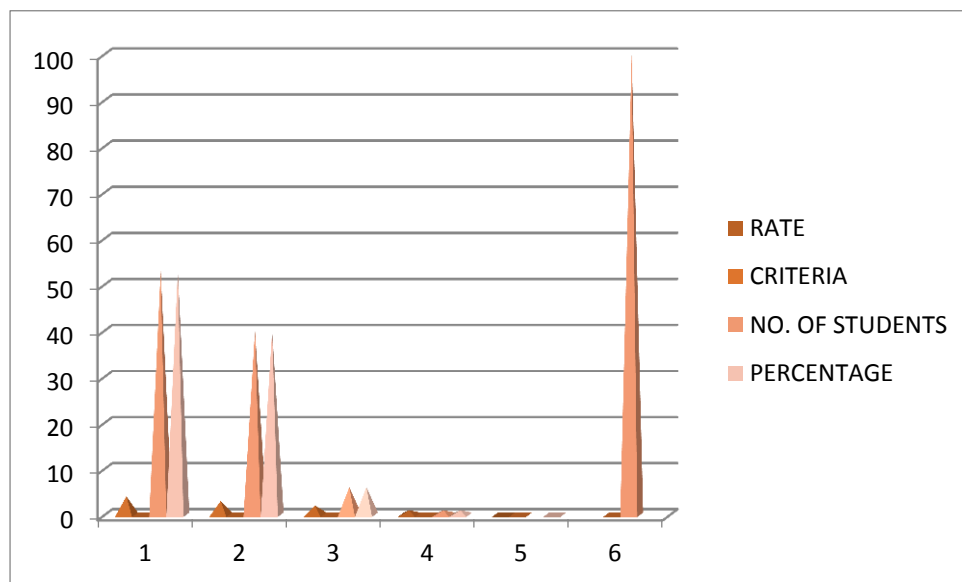
RATE	CRITERIA	NO. OF STUDENTS	PERCENTAGE
4	Strongly agree	43	43
3	Agree	49	49
2	Neutral	8	8
1	Disagree	0	0
0	Strongly disagree	0	0
TOTAL		100	



INTERPRETATION: STUDENTS STRONGLY AGREE THAT THE INSTITUTION MAKES EFFORT TO ENGAGE STUDENTS IN THE MONITORING, REVIEW AND CONTINUOUS QUALITY IMPROVEMT OF THE TEACHING LEARNING PROCESS

Q16. THE INSTITUTE/TEACHERS USE STUDENT CENTRIC METHODS, SUCH AS EXPERIENTIAL LEARNING, PARTICIPATIVE LEARNING AND PROBLEM SOLVING METHODOLOGIES FOR ENHANCING LEARNING EXPERIENCES

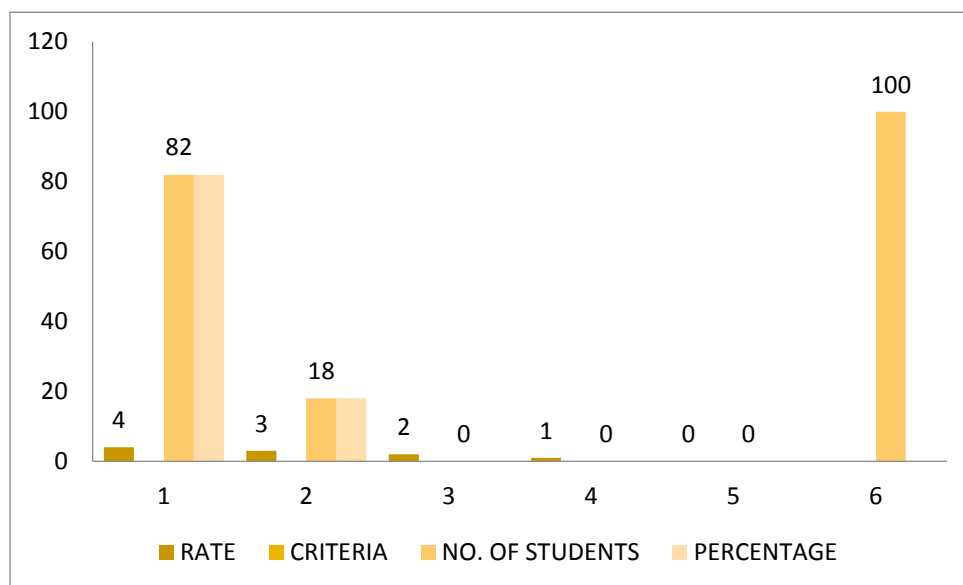
RATE	CRITERIA	NO. OF STUDENTS	PERCENTAGE
4	To a great extent	53	53
3	Moderate	40	40
2	Some what	6	6
1	Very little	1	1
0	Not at all		0
TOTAL		100	



INTERPRETATION: MAJORITY STUDENTS AGREE TO A GREAT EXTENT THAT THE INSTITUTE/TEACHERS USE STUDENT CENTRIC METHODS, SUCH AS EXPERIENTIAL LEARNING, PARTICIPATIVE LEARNING AND PROBLEM SOLVING METHODOLOGIES FOR ENHANCING LEARNING EXPERIENCES

Q17. TEACHERS ENCOURAGE YOU TO PARTICIPATE IN EXTRA CURRICULAR ACTIVITIES

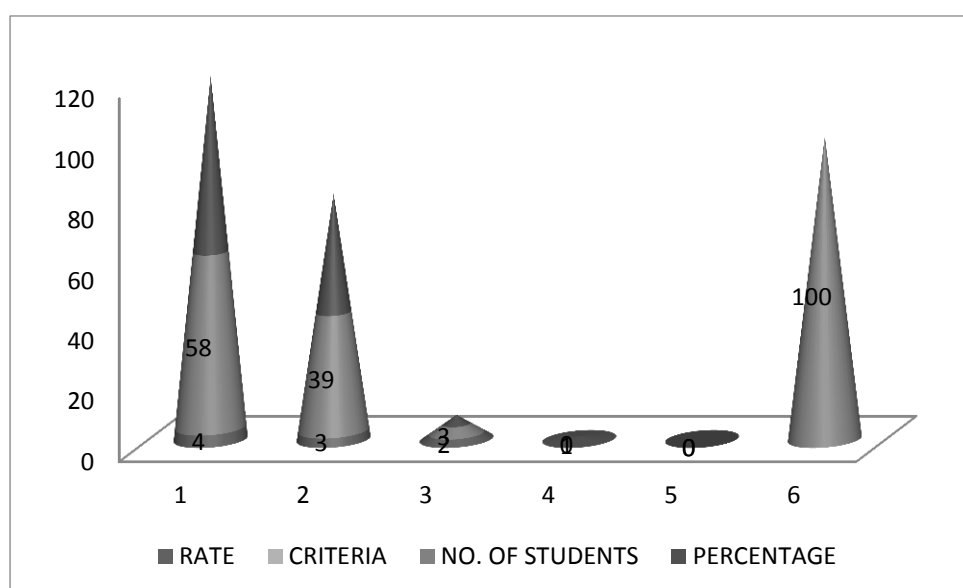
RATE	CRITERIA	NO. OF STUDENTS	PERCENTAGE
4	Strongly agree	82	82
3	Agree	18	18
2	Neutral	0	0
1	Disagree	0	0
0	Strongly disagree	0	0
	TOTAL	100	



INTERPRETATION : STUDENTS STRONGLY AGREE THAT TEACHERS ENCOURAGE THEM TO PARTICIPATE IN EXTRA CURRICULAR ACTIVITIES.

Q18. EFFORTS ARE MADE BY THE INSTITUTE/TEACHERS TO INCULCATE SOFT SKILLS, LIFE SKILLS AND EMPLOYABILITY SKILLS TO MAKE YOU READY FOR THE WORLD OF WORK

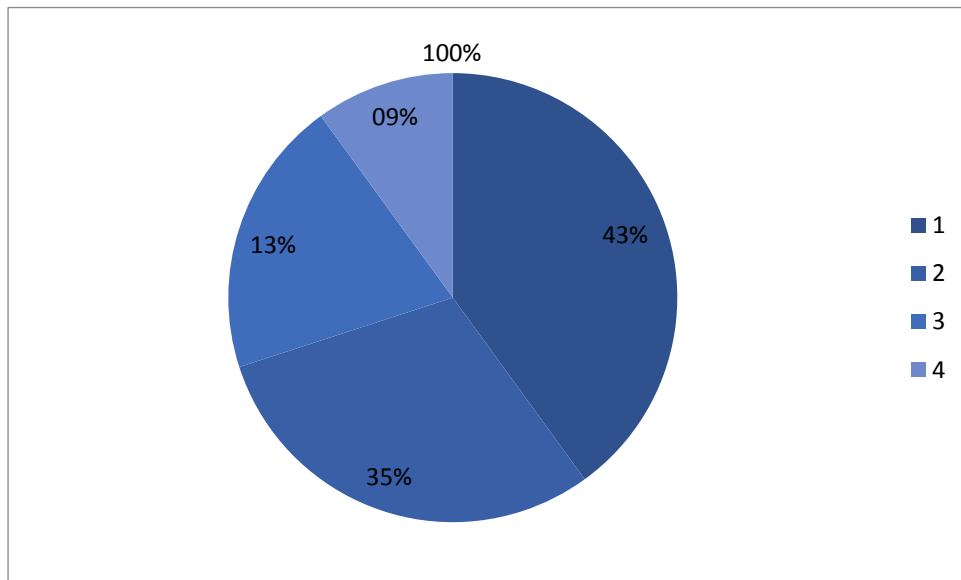
RATE	CRITERIA	NO. OF STUDENTS	PERCENTAGE
4	To a great extent	58	58
3	Moderate	39	39
2	Some what	3	3
1	Very little	0	0
0	Not at all	0	0
TOTAL		100	



INTERPRETATION : MAJORITY STUDENTS AGREE TO A GREAT EXTENT THAT EFFORTS ARE MADE BY THE INSTITUTE/TEACHERS TO INCULCATE SOFT SKILLS, LIFE SKILLS AND EMPLOYABILITY SKILLS TO MAKE YOU READY FOR THE WORLD OF WORK

Q19. WHAT PERCENTAGE OF TEACHERS USE ICT TOOLS SUCH AS LCD PROJECTOR, MULTIMEDIA, ETC. WHILE TEACHING

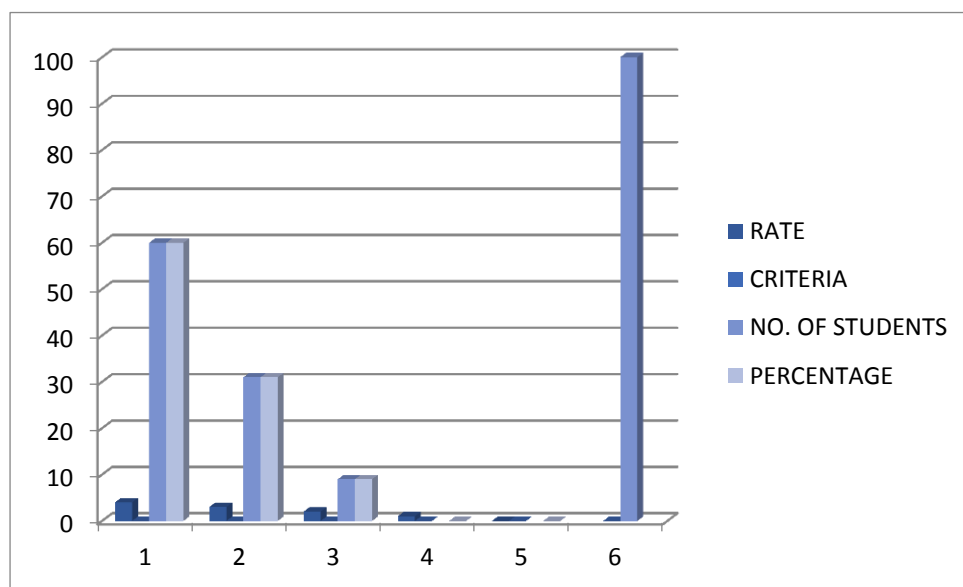
RATE	CRITERIA	NO. OF STUDENTS	PERCENTAGE
4	Above 90%	35	35
3	70 - 89%	43	43
2	50-69%	13	13
1	30-49%	9	9
0	Below 29%	0	0
TOTAL		100	



INTERPRETATION : 43% OF STUDENTS AGREE THAT 70 - 89% PERCENTAGE OF TEACHERS USE ICT TOOLS SUCH AS LCD PROJECTOR, MULTIMEDIA, ETC. WHILE TEACHING

Q20. THE OVERALL QUALITY OF TEACHING-LEARNING PROCESS IN YOUR INSTITUTE IS VERY GOOD

RATE	CRITERIA	NO. OF STUDENTS	PERCENTAGE
4	Strongly agree	60	60
3	Agree	31	31
2	Neutral	9	9
1	Disagree	0	0
0	Strongly disagree	0	0
	TOTAL	100	



INTERPRETATION: MAJORITY STUDENTS STRONG AGREE THAT THE OVERALL QUALITY OF TEACHING-LEARNING PROCESS IN YOUR INSTITUTE IS VERY GOOD